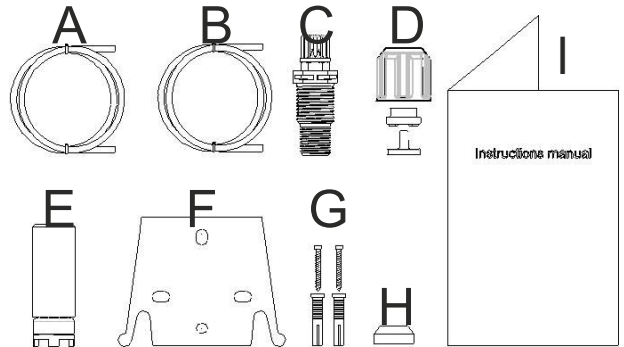


INSTALLATION AND START-UP MANUAL FOR KOMPACT AMS DOSING PUMP

PACKING CONTENTS:

- A. Opaque hose for connecting the pump's outlet to the injection point
- B. Transparent hose for suction and for connecting the bleeding valve up for manual priming
- C. Injection fitting
- D. Hose connection kit
- E. Bottom filter
- F. Wall mounting bracket
- G. Anchors for securing the pump to the wall
- H. Screw protection caps
- I. Instructions Manual



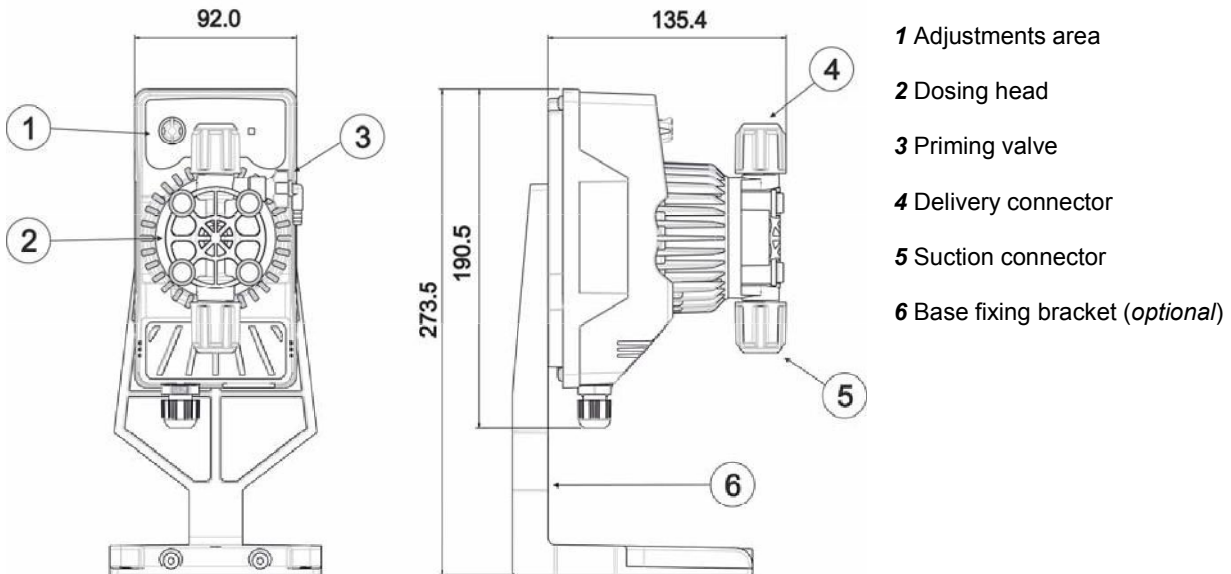
Below are the technical and pump performance data:

Model	PVC			Connections (mm)	stroke / min
	Pressure	Flow rate	cc /stroke		
	bar	l/h		Int / Ext	
200	8	5	0.52	4 / 6	160
	10	3	0.31		

INTRODUCTION

The pump is composed of a part that houses the control electronics and the magnet and a hydraulic side always in contact with the liquid to be dosed.

Check the rating plate of the main features of your pump



We recommend checking the chemical compatibility between the product and the materials in contact.

PUMP HEAD MATERIALS

- **Pump body:** PVDF
- **Valves:** PVDF
- **Balls:** Ceramic
- **Diaphragm:** PTFE

SPECIFICATIONS

- **Weight:** 1.5 Kg
- **Power supply:** 230 Vac (50 Hz)
- **Consumption:** 12 W
- **Fuse:** 2A 250V T 5x20
- **Protection level:** IP65

READ THE FOLLOWING WARNINGS BEFORE INSTALLING OR PERFORMING MAINTENANCE ON THE PUMP.



WARNING: BEFORE DOING ANY WORK ON THE PUMP, ALWAYS FIRST DISCONNECT THE

POWER SUPPLY CABLE.



WARNING: PRODUCT INTENDED FOR PROFESSIONAL USE BY SKILLED PERSONNEL.

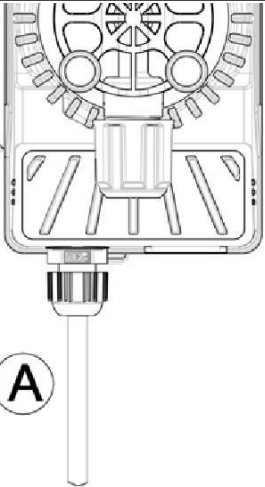


WARNING: MAINTENANCE WORK ON THE PUMP MUST BE CARRIED OUT BY AUTHORISED AND

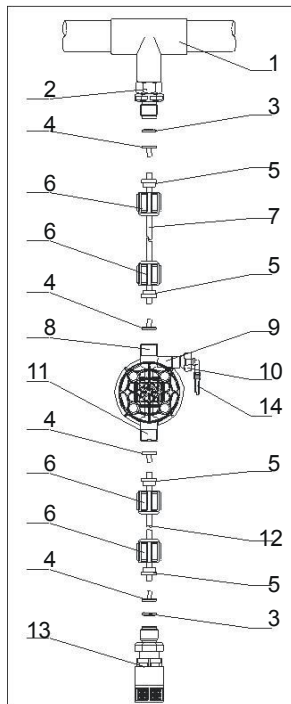
TRAINED PERSONNEL ONLY.

- 0 **H₂SO₄ SULPHURIC ACID** All the pumps are tested with water. Before dosing chemical products that may react with water, dry all the internal parts of the plumbing thoroughly.
- 0 Install the pump in a zone where the environment temperature does not exceed 40°C and the relative humidity is below 90%. The pump has an IP65 protection level. Avoid installing the pump directly exposed to sunlight.
- 0 Install the pump so that any inspection and maintenance operations are easy to carry out, then secure the pump firmly in order to prevent excessive vibrations.
- 0 Check that the power supply available in the network is compatible with that indicated on the pump label.

WIRING

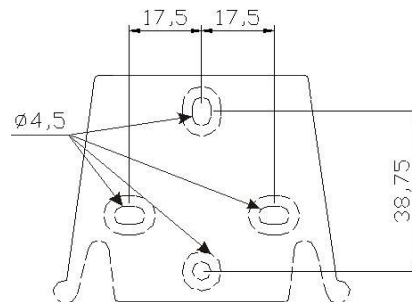
	<p>Input A Power supply 230Vac (50 Hz)</p>	<p>The pump must be connected to a power supply that complies with the information indicated on the label on the side of the pump. Failure to respect these limits may cause damage to the pump itself.</p> <p>The pumps have been designed to absorb small over voltages. Therefore, in order to prevent the pump from being damaged, it is always preferable to ensure that the pump does not have a power source shared with electrical appliances that generate high voltages.</p> <p>Connection with the three-phase 380V line should only be made between phase and neutral. Connections MUST NOT be made between phase and ground.</p>
---	---	--

PLUMBING CONNECTIONS



1. Injection point
2. Injection fitting
3. Seal
4. Pipe holder
5. Pipe clamp
6. Ring nut
7. Delivery hose (rigid)
8. Delivery valve
9. Pump body
10. Bleed valve
11. Suction valve
12. Suction hose (soft)
13. Bottom filter
14. Bleed valve connector

Fixing templates wall bracket



After around 800 hours of work, tighten the bolts on the pump body, applying a tightening torque of **3 Nm**.

When making the plumbing connections, make sure that you follow the instructions below:

- 0 The **BOTTOM FILTER** must be installed so that it is always positioned 5-10 cm from the bottom, in order to prevent any formation of deposits.
- 0 Installation of a pump suction head is recommended for pumps with very low flow rates. In particular, when dosing products which develop gas (e.g. sodium hypochlorite, hydrazine, hydrogen peroxide, etc.).
- 0 If you need to use longer hoses than those provided in the installation kit, it is important that you use hoses of the same dimensions as those supplied with the pump. If the **DELIVERY HOSE** may be exposed to the sun's rays, we recommend using a black hose able to withstand ultraviolet rays.
- 0 It is advisable to position the **INJECTION POINT** higher than the pump or tank.
- 0 The **INJECTION VALVE**, supplied with the pump, must always be installed at the end of the delivery line on of the dosing flow.

START-UP

Once all the aforementioned operations have been completed, the pump is ready to be started.

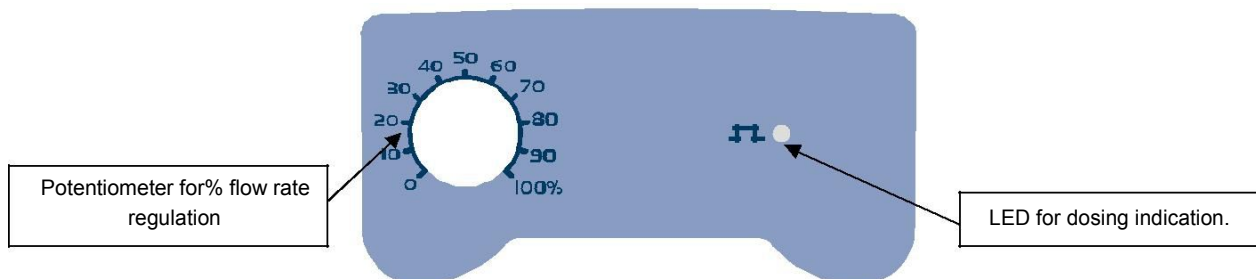
Priming

- 0 Start the pump.
- 0 Open the priming connector by turning the knob in a counter-clockwise direction and wait for liquid to come out of the pipe connected to it.
- 0 Once you are sure that the pump is completely full of liquid, you can close the connector and the pump will begin to dose.

TROUBLESHOOTING

Problem	Possible Cause	Solution
The pump is working properly but the dosage is interrupted	Blocked valve	Clean the valves or replace them if it is not possible to remove the build-ups
	Excessive suction height	Position the pump or tank so as to reduce the suction height
	Excessive liquid viscosity	Reduce the suction height or use a pump with a bigger flow capacity
Insufficient flow capacity	Leakage from the valve	Check that the ring nuts are properly tightened
	Excessive liquid viscosity	Use a pump with a bigger flow capacity or reduce the suction height
	Valve partially blocked	Clean the valves or replace them if it is not possible to remove the build-ups
Irregular pump flow capacity	Transparent PVC hose on delivery	Use an opaque PE pipe on delivery
Broken diaphragm	Excessive back-pressure	Check the system pressure. Check whether the injection valve is blocked. Check whether there are any blockages between the delivery valves and the injection point.
	Operation without liquid	Check the presence of the foot filter (valve).
	Membrane not secured correctly	If the membrane has been replaced, make sure that the same is correctly tightened.
The pump does not switch on	Insufficient power supply	Check whether the pump plate data corresponds to that of the electricity network.

KOMPACT AMS – Control Panel



The pump dispenses the percentage selected manually with a potentiometer.

Steady green LED switches off with every stroke that the pump runs.

Flashing Green led with the potentiometer to 0.

